



6 Loosley Green, Aylesbury, HP21 9EY

£400,000

- Four bedroom mid terrace townhouse
- Modern kitchen
- Two bathrooms plus downstairs cloakroom
- Two Allocated parking spaces
- Spacious lounge
- Utility room
- Low maintenance south facing rear garden
- Solar Panels

## THE PROPERTY

Situated within walking distance of Stoke Mandeville Hospital, this well presented four bedroom mid terrace townhouse offers spacious and versatile accommodation across three floors, making it an ideal home for growing families, professional couples or those looking for flexible living space.

The ground floor comprises a welcoming entrance hall, a modern kitchen diner with ample storage and worktop space, a separate utility room, downstairs cloakroom and a bedroom currently used as a home office, perfect for remote working or a potential fourth bedroom/playroom.

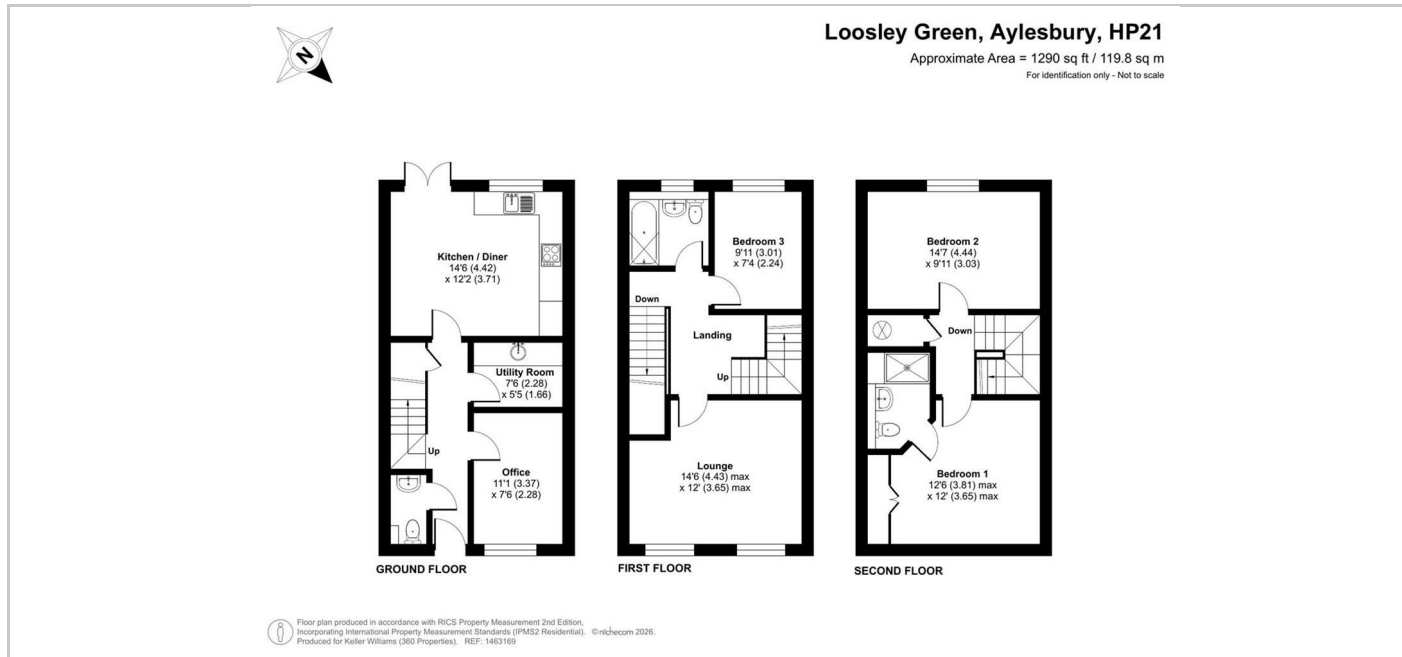
On the first floor you will find a bright and spacious lounge filled with natural light, alongside a generous double bedroom and a contemporary family bathroom.

The second floor offers two further well proportioned bedrooms, including an impressive main bedroom, together with a modern ensuite.

Externally, the property benefits from a low maintenance south facing rear garden, ideal for entertaining and relaxing during the warmer months. To the front there are two allocated parking spaces and attractive green surroundings creating a pleasant outlook. As an added benefit the property also has solar panels.

Located within easy reach of Aylesbury town centre, local schools, parks and transport links including Aylesbury train station, the property is perfectly positioned for both families and commuters alike.

Council tax band D



## SITUATION

## Directions

Market House Market Sq, Aylesbury, HP1201TN

Tel: 01296 767555 Email: [francis@360-properties.co.uk](mailto:francis@360-properties.co.uk) <https://www.360-properties.co.uk>